



# **STUDENT HANDBOOK**

**Doctor of Medicine (MD) Programme**

Faculty of Medicine and Health Sciences

# 2025-2026

# CONTENT

No.	Title	Page
	Dean's Foreword	1
1.0	Introduction	2
2.0	Faculty's Vision, Mission, Goals and Educational Philosophy	3
3.0	Introduction to UNIMAS Undergraduate Medical Programme	4
4.0	Facilities Available in the Faculty	6
5.0	Academic Regulations	7
6.0	Tuition Fees	8
7.0	Academic Matters	9
8.0	Assessment System	20
9.0	Deferment of Study	32
10.0	Prohibition of Plagiarism	33
11.0	The Academic Advisory System	34
12.0	Eligibility for Graduation / Convocation	35
13.0	Faculty's Awards	36
14.0	Dress Code for Students	37
15.0	Sexual Harassment Code	40
16.0	Student's Grievance Support	41
17.0	Top Management of the University	42
18.0	Faculty's Management and Academic Staff	43
19.0	Academic Calendar FMHS 2025/2026	52
	Appendix A:	53
	List of University Elective Courses Offered in FMHS	
	Appendix B:	54
	English Course Structure for 2024/2025 Intake Onwards	

## Dean's Foreword



Faculty of Medicine and Health Sciences would like to congratulate and welcome all the new students who have registered for the Medical Programme. You have chosen health care as your career path, and you will encounter several challenges along the way as you move along during your teaching-learning sessions, as well as when you do your clinical training.

All these challenges can be overcome as long as you believe that you have made the right choice and have the confidence in yourselves to complete the programme successfully.

You have the opportunity to explore new knowledge both in theory and practice. The educational approach here is very much student-centred, where all students will be able to explore new knowledge and have the initiative to improve their interactive skills whenever they encounter staff and patients. The health profession has a significant impact on the personal development of patients, encompassing various aspects of physical and psychological health; as such, every student needs to demonstrate an appropriate attitude and behaviour in such circumstances.

During your medical school training, you will have the opportunity to visit various hospitals, health centres, and villages, which will be arranged according to your learning blocks in Phase One and your clinical posting in Phase Two. These are designed to expose you to the health needs of the population in both rural and urban areas. At the same time, you will learn the impact of socioeconomic and cultural factors on medical disorders.

In this handbook, there is a list of names of key personnel in the faculty who will be able to help you, so please do not hesitate to contact them if necessary.

To conclude, I wish you all the best and am confident that, with our staff's support and determination, we will successfully face the challenges ahead.

Professor Dr Asri bin Said

**Dean**

**Faculty of Medicine and Health Sciences**

## 1.0 INTRODUCTION

### **UNIMAS Vision**

*A leading global university for a sustainable future.*

### **UNIMAS Mission**

*To enhance the social and economic impacts on the global community through the pursuit of excellence in teaching, research, and strategic engagement.*

### **Brief Information on UNIMAS**

Universiti Malaysia Sarawak (UNIMAS), Malaysia's eighth university, was officially incorporated on the 24<sup>th</sup> December 1992. A university that is contemporary in character and forward-looking in outlook, it is committed to providing the nation with leaders, managers, scientists, technical specialists, and thoughtful citizens who are capable of handling complex challenges - confidently, competently, and creatively.

The University opened its doors to the first batch of 118 students on the 8<sup>th</sup> of August 1993, supported by around 30 academic staff, into its two pioneering faculties, the Faculty of Social Sciences and the Faculty of Resource Science and Technology. Two academic support centres and five more faculties were established to offer more undergraduate and postgraduate programmes. Several more institutes were established to offer additional courses and research activities, thereby supporting UNIMAS' vision and mission.

The Faculty of Medicine and Health Sciences (FMHS) registered its 28 pioneering students in May 1995. As of 2023, a total of 2,036 students had graduated.

UNIMAS is currently led by the seventh Vice-Chancellor, YBhg Prof Dr Hj Ahmad Hata bin Rasit, effective from the 8<sup>th</sup> of January 2024.

## **2.0 FACULTY'S VISION, MISSION, GOALS AND EDUCATIONAL PHILOSOPHY**

### **2.1 Vision**

A Global Leader in Medicine and Health Sciences Education

### **2.2 Mission**

To enhance the health and well-being of the global community through the pursuit of excellence in teaching, research and strategic collaboration.

### **2.3 Goals**

- Producing competent health professionals who will be an integral part of the community
- Creating impactful translational research that benefits the community
- Strategic regional and international collaborations by leveraging on our rich culture and biodiversity

### **2.4 Educational Philosophy**

The educational programme emphasises the total development of highly competent health professionals who will be an integral part of the community and sensitive to its needs. They will be imbued with high moral and ethical values, as well as aesthetic sensibility. These will be achieved through an innovative, broad-based, student-centred and problem-based educational programme that is community- and practice-oriented while achieving a balance between science and the art of medicine.

## **3.0 INTRODUCTION TO UNIMAS UNDERGRADUATE MEDICAL PROGRAMME**

### **3.1 Undergraduate Medical Programme**

UNIMAS offers a progressive medical education system comparable to those found in other medical faculties, both nationally and internationally. Medical education today requires medical students who are critical of their learning. They should be able to seek knowledge on their own accord, evaluate medical problems, and seek solutions to their challenges. They are expected to effectively communicate and manage issues related to medicine and the community's health. The medical education approaches employed by this faculty provide medical students with opportunities to develop their potential and skills, enabling them to utilise these capabilities fully. These approaches require students who are confident that the medical profession is their best choice.

### **3.2 Programme Objectives**

The undergraduate medical programme at UNIMAS is created to meet the current needs of the nation and the profession. It considers changes occurring in various medical disciplines. Teaching-learning experiences are arranged to fulfil the demands of the local professional body in terms of medical functions and roles. Each learning experience is designed to strike an appropriate balance and integration between fundamental scientific medical knowledge and clinical practice competency.

#### **3.2.1 Programme Educational Objectives (PEO)**

The programme shall produce graduates who are able to:

- 1) Critically apply current medical knowledge for problem-solving in the practice of medicine.
- 2) Effectively apply the skills of physical examination, clinical and laboratory procedures, as well as interpersonal and communication skills in various clinical settings encountered.
- 3) Competently practise self-directed lifelong learning through various digital technologies and research methodologies.
- 4) Professionally demonstrate the skills of good managerial, leadership and ethical code of conduct.



### 3.2.2 Programme Learning Outcome (PLO)

Upon graduating this programme, the students are able to:

- 1) Apply and integrate basic medical sciences with clinical knowledge acquired for the diagnosis and management of common health problems of an individual and the community. [MQF1 - Knowledge and understanding]
- 2) Critically analyse individual and community healthcare and formulate plans to resolve these problems. [MQF2 - Cognitive skills]
- 3) Perform the skills of history-taking, physical examination, and basic laboratory and clinical procedures in patient care and healthcare promotion. [MQF3A - Practical skills]
- 4) Appreciate the influence of socio-cultural, religious and environmental factors affecting individual and community healthcare delivery when discharging one's professional responsibilities. [MQF3B - Interpersonal skills]
- 5) Demonstrate effective interpersonal and communication skills with various stakeholders in a healthcare ecosystem (i.e., patients and their family members, superiors and other team members) using various mediums and under various circumstances. [MQF3C - Communication skills]
- 6) Apply digital technologies in one's clinical and community work environment. [MQF3D - Digital skills]
- 7) Integrate the various fields of knowledge and apply biostatistics for research [MQF3E - Numeracy skills]
- 8) Demonstrate effective leadership skills and basic management skills in areas of human resources, materials and information related to healthcare delivery. [MQF3F - Leadership, autonomy and responsibility]
- 9) Demonstrate good personal skills (independent learning, integrity, punctuality, etc) and pursue further self-directed lifelong learning activities. [MQF4A - Personal skills]
- 10) Demonstrate good entrepreneurial skills (e.g., creativity, grit, and drive) in various clinical work environment. [MQF4B - Entrepreneurial skills]
- 11) Demonstrate high moral, professional and ethical values, and to be adaptable to work in various healthcare settings. [MQF5 - Ethics and professionalism]

## 4.0 FACILITIES AVAILABLE IN THE FACULTY

To ensure that the undergraduate medical programme is conducted most effectively, integrated laboratories complete with computer facilities, anatomy models, and experimental facilities for biochemistry, physiology, and pharmacology are available.

Printed and electronic reference materials are available from the faculty's library and from the *Perpustakaan Tun Abdul Rahman Ya'kub* (PeTARY).



UNIMAS City Campus is located adjacent to the Sarawak General Hospital in Kuching. Additionally, the Sarawak Heart Centre, Sibu Divisional Health Office, Serian Hospital, Sentosa Hospital, and various public health clinics are utilised for clinical teaching and learning. All medical students are required to undergo practical and clinical training in these centres, as well as in general practitioner clinics and various community settings.

Soon, the UNIMAS teaching hospital (*Hospital Pengajar* UNIMAS) located in the vicinity of UNIMAS' main campus in Kota Samarahan, will be operational. The primary care centre of this teaching hospital began its operation on the 19<sup>th</sup> of August 2024. These resources will tremendously facilitate clinical teaching and learning processes in the future.



## 5.0 ACADEMIC REGULATIONS

Academic regulations on the bachelor's degree can be referred to in the latest UNIMAS Academic Regulations for Undergraduate Studies.

English version	Malay version
	
<a href="https://www.bpps.unimas.my/media/attachments/2021/10/01/academic-regulations-for-undergraduate-studies.pdf">https://www.bpps.unimas.my/media/attachments/2021/10/01/academic-regulations-for-undergraduate-studies.pdf</a>	<a href="https://www.bpps.unimas.my/media/attachments/2021/10/01/peraturan-akademik-ijazah-sarjana-muda-unimas.pdf">https://www.bpps.unimas.my/media/attachments/2021/10/01/peraturan-akademik-ijazah-sarjana-muda-unimas.pdf</a>

## 6.0 TUITION FEES

All students are required to pay the tuition fees during registration at the beginning of the semester.

Payment	Fee	Amount (RM)
One-off payment*	Registration	750.00
<b>TOTAL</b>		<b>750.00</b>
Payment for every semester	Takaful	6.00
	Tuition Fee	900.00
	Health	25.00
	Laboratory	50.00
	Welfare	5.00
	Hostel	399.00
	Miscellaneous	120.00
<b>TOTAL</b>		<b>1505.00</b>

*\*One-off payment for Year 1 student:*

<i>Registration:</i>	<i>RM20.00</i>
<i>Minggu Aluan Pelajar:</i>	<i>RM270.00</i>
<i>Matric Card:</i>	<i>RM10.00</i>
<i>Alumni:</i>	<i>RM100.00</i>
<i>Co-curriculum fee:</i>	<i>RM300.00</i>
<i>Medical check-up fee:</i>	<i>RM50.00</i>
<b><i>TOTAL:</i></b>	<b><i>RM750.00</i></b>

(Reference: Undergraduate Studies Division (BPPS) - Fees for New and Current Students. Available at: <https://www.bpps.unimas.my/new-student-fees>, <https://www.bpps.unimas.my/current-student-fees>)

For UNIMAS Commercial Undergraduate Programme (Direct Admission) students, the total fee for the entire five (5) years of study is RM400,000.00.

## 7.0 ACADEMIC MATTERS

### 7.1 The UNIMAS Undergraduate Medical Curriculum Approach

The following are the key features of its curricular approach:

- a) Integration is a crucial concept that combines basic medical sciences of various disciplines into clinical application and practice.
- b) The course content focuses on medical knowledge, clinical skills, and the development of appropriate attitudes, effective communication skills, and professionalism based on the ethics of conduct, which are the essential foundations for the continued development of the individual.
- c) Generic and university elective courses also contribute to developing these attributes and are embedded in the medical curriculum. Students must satisfy the requirements of these courses before being awarded their degree.
- d) The curriculum sequence is a planned progression of cumulative learning in theory and practice, reinforcing horizontal and vertical integration of different medical knowledge and skills components.
- e) The problem-based learning approach guides the students in relating basic medical sciences to clinical problems.
- f) Student activities in community-based projects and initiatives addressing health challenges mirror the educational philosophy of community-oriented problem-solving.
- g) Early clinical exposure serves not only to ensure integration and relevance but also to stimulate students' interest. Students' learning environment encompasses a diverse range of settings, from Faculty-based facilities to real-world, everyday medical practices in various healthcare settings. The UNIMAS Teaching Hospital is expected to begin its operation in the next few years. For now, establishments under the Ministry of Health of Malaysia, private clinics and hospitals, and community-based healthcare facilities have enabled the Faculty to access many exemplary healthcare management for incorporation into its clinical teaching and learning activities.
- h) Individual capability and differences are recognised, and various teaching and learning strategies are employed. These include, but are not limited to, the provision of elective subjects, problem-based learning, flipped learning, lectures, family education, projects, tutorials, seminars, and bedside teaching in the wards and healthcare facilities. The evaluation of students' performances is done through continuous assessment, end-of-block /-posting examinations and professional examinations at the end of each of the two study phases.

## 7.2 Duration of the Undergraduate Medical Programme

The undergraduate Medical Programme is five (5) academic years. A student may repeat any year but is not permitted to repeat any particular year twice, with a total of up to seven (7) years registered as a medical student.

## 7.3 Categories of Courses

### 7.3.1 Core Courses

The programme is divided into two phases, Phase I and Phase II. Phase I is primarily devoted to studying the basic medical sciences, while Phase II focuses on the respective clinical disciplines. However, there is considerable integration of knowledge and skills between the two phases. In a vertically integrated curriculum, early exposure to basic clinical skills is interspersed with instruction in basic medical sciences to help students understand the relevance of the material they are studying and apply it in various clinical scenarios. These skills are taught to the students via simulated history-taking and basic clinical examinations by clinicians.

#### i. Phase I

This phase comprises the first two years of the programme (Year 1 and Year 2) with 12 core courses: 11 blocks and one research course.

The primary focus of this phase is the study of the basic medical sciences, where the principal subjects, including cell biology, molecular genetics, anatomy, physiology, biochemistry, parasitology, microbiology, immunology, pharmacology, haematology and pathology, are integrated into block systems rather than a discipline-based approach. Communication and observation skills, medical ethics, behavioural sciences, and early research concepts and processes are also discussed and explored during this phase.

## The Teaching-Learning Activities in Phase I:

*Problem-based learning (PBL):* where various organ systems are studied and organised using contrived cases of common clinical scenarios (triggers). Through small-group discussions, students formulate their learning needs and subsequently engage in self-directed learning, utilising various information sources, including textbooks, models, dissected specimens (anatomy), charts, electronic sources, and discussions with faculty members. This material is then shared and discussed within the group, guided by the facilitator.

*Lectures and practical:* a structured presentation of information to a large group of students. These methods effectively convey foundational knowledge and ensure consistency in the information delivered.

*Flipped learning (FL):* the resources and case studies are given to the students before class. The case studies transition the group learning space into an individual learning space, transforming the group environment into a dynamic, interactive learning environment where the lecturer guides students as they apply concepts and creatively engage with the subject matter. This enhances student engagement and understanding by allowing more time for active learning.

*Team-Based Learning (TBL):* an evidence-based collaborative learning teaching strategy designed around units of instruction that are taught in a three-step cycle: preparation (pre-reading of assigned learning resources), in-class readiness assurance testing (Individual Readiness Assurance – IRAT: Team Readiness Assurance Test – TRAT with immediate feedback and clarification), and application-focused exercise (clinical problem-solving activities with intra-team and facilitated inter-discussion).

*Community orientation* is emphasised and achieved through family health programmes, whereby students ‘adopt’ a family and follow the health and socio-economic status of the family through regular visits or follow-ups.

For the academic session 2025/2026, the Phase I blocks that are conducted in Year 1 and Year 2 are as follows: -

### Year 1

Course	Credit
MDP10108 Foundation	8
MDP10208 Man in the environment	8
MDP10307 Blood and Immunology	7
MDP10408 Musculoskeletal System and Head & Neck	8
MDP10507 Endocrine, Metabolism and Nutrition	7
*MDP10702 Family Health 1	2

### Year 2

Course	Credit
MDP20109 Nervous System and Behaviour	9
MDP20208 Gastrointestinal System	8
MDP20310 Cardiovascular and Respiratory System	10
MDP20409 Renal and Reproductive System	9
*MDP20505 Elective I (Research Project)	5
*MDP20902 Family Health 2	2

*\* This course runs throughout the year, with course registration in Sem 3*

## ii. Phase II

This phase comprises Year 3, Year 4 and Year 5 of the medical curriculum, during which students are involved in clinical clerkships or postings at the Sarawak General Hospital, *Pusat Jantung Sarawak*, Serian Hospital, Sentosa Hospital, Sibu Divisional Health Office, public health clinics and private clinics for clinical education and training.

During these clinical years, students interact directly with patients to acquire expertise in history-taking, physical examinations, making clinical diagnoses and performing simple bedside procedures under the supervision of the faculty's clinicians and the hospital/healthcare facility staff.



Postings are organised to ensure that students receive ample opportunities to observe the longitudinal care, comprehensive management, and supervision (physical, mental, and spiritual) of patients. This helps with the acquisition of problem-solving skills relevant to patient management and the development of clinical skills.

During the community health posting, students must perform epidemiological studies and observe healthcare delivery in the community and public healthcare settings.

Students are encouraged to develop patterns of learning that are active, self-directed, and relevant to the curriculum. Weekly seminars are planned to cover the core curriculum, and all students are required to participate actively. Communication skills with patients and other health professionals are emphasised informally as students interact with patients and ward staff during the clinical postings.

Emphasis is also given to issues in medical practices, for example, medical ethics, medico-legal issues (including malpractice), control of health risks in occupations and the environment, and the development of an understanding of behaviours that can contribute to the onset of diseases. The foundation of ethical principles acquired during Phase I is further developed during clinical postings through role modelling and active discussions.

For the academic session 2025/2026, Phase II postings are shown below:

### **Year 3**

Course	Credit
MDP30101 Introduction to Clinical Clerkship	1
MDP30209 Medicine	9
MDP30309 Surgery	9
MDP30408 Obstetrics & Gynaecology	8
MDP30609 Community and Public Health	9
MDP30702 Forensic Medicine	2
MDP30902 Clinical Diagnosis Laboratory	2
MDP31002 Radiology	2

**Year 4**

Course	Credit
MDP40210 Psychological Medicine	10
MDP40408 District Hospital and Family Medicine	8
MDP40603 Ophthalmology	3
MDP40703 Ear, Nose and Throat	3
MDP41208 Paediatrics	8
MDP41308 Orthopaedics	8
MDP30804 Elective II (Clinical Elective)	4

**Year 5**

Course	Credit
MDP50108 Paediatrics	8
MDP50208 Obstetrics & Gynaecology	8
MDP50512 Surgery	12
MDP50612 Medicine	12

### 7.3.2 University Courses (*Kursus Universiti*)

Courses under this category are designed for students to develop positive attitudes and culturally acceptable behaviour and personality traits. These courses also encourage the development of a balance between autonomy and cooperation, assertiveness and working independently without direction from higher authorities, as well as the willingness to work as a team member in achieving common objectives.

#### 7.3.2.1 Generic Courses

University courses are compulsory for all undergraduates at UNIMAS to fulfil the graduation criteria. Grades obtained in Generic courses are included when calculating the student's CGPA. The current minimum number of credits required for Generic courses is six credits.

Course Code	Course Title	Credits	Remarks
PBI 1072	English for Professional Communication	2	Students need to choose and register for <b>TWO</b> courses only based on the MUET Band.
PBI 1102	Academic English I	2	
PBI 1092	Academic English II	2	
PBI 1082	English for Occupational Purposes	2	
PBM 2072	Bahasa Melayu	2	✓

✓ *This course is compulsory to register.*

Transfer of credits may be considered to a maximum of about a third of the total course credits for Generic Courses (i.e., up to 4 credits), provided that the student can supply evidence that they have previously attended similar courses with satisfactory results (i.e., at least the equivalent of grade B-) from institutions recognised by UNIMAS.

### 7.3.2.2 General Studies Subjects (*Mata Pelajaran Umum*)

The General Studies Subjects (MPU) was a directive from the Ministry of Education, dated 18 June 2013, which requires all new cohorts of students pursuing degree programs (both International and Malaysian) enrolled in September 2013 and onwards to take the MPU subject as a prerequisite for their degree award. The minimum number of credits required for MPU courses is ten credits.

Course Code	Course Title	Credits	Remarks
MPU 3182	Falsafah dan Isu Semasa	2	✓
MPU 3192	Penghayatan Etika dan Peradaban	2	✓
MPU 3222	Asas Pembudayaan Keusahawanan	2	✓
MPU 3332	Warisan Nusa	2	Students need to choose and register for <b>ONE</b> course only
MPU 3352	Kerajaan Dan Pentadbiran di Malaysia	2	
MPU 3362	Pengenalan Kepada Tingkah Laku Organisasi	2	
<b>MPU 3372</b>	<b>Integriti dan Anti-Rasuah (KIAR)*</b>	<b>2</b>	
MPU 3432	Kokurikulum Berkredit (Daya Usaha dan Inovasi)	2	Students need to choose and register for <b>ONE</b> course only
MPU3442	Kokurikulum Berkredit (Kebudayaan)	2	
MPU3452	Kokurikulum Berkredit (Kepimpinan)	2	
MPU3462	Kokurikulum Berkredit (Kesukarelawanan)	2	
MPU3472	Kokurikulum Berkredit (Keusahawanan)	2	
MPU3482	Kokurikulum Berkredit (Khidmat Komuniti)	2	
MPU3492	Kokurikulum Berkredit (Sukan)	2	
MPU34102	Kokurikulum Berkredit (Pengucapan Awam)	2	

✓ *This course is compulsory to register.*

*\*For students registering under the UNIMAS MD programme*

### 7.3.2.3 University Elective Courses (*Kursus Elektif Universiti*)

University Elective courses are additional courses which all UNIMAS students must take. These courses aim to enable students to acquire a reasonable and in-depth knowledge in fields other than their chosen field. Consequently, University Elective courses are more challenging than Generic courses.

Although UNIMAS students can choose any elective course of interest during their studies, MD programme students are only allowed to take University Elective courses during their first year of the MD programme due to the nature of their training schedule. Taking these courses after Year 2 is virtually impossible, as students will be heavily involved in the various clinical postings/rotations outside the UNIMAS main campus in Kota Samarahan.

Students must complete three credits (one elective university course). The grade obtained in a University Elective course is considered when calculating the student's CGPA.

Details on the sets of endorsed university elective courses will be provided during the Faculty's orientation session. Please refer to **Appendix A** for a List of University Elective Courses offered in FMHS.

### 7.3.2.4 Remedial Course (*Kursus Pengukuhan*)

Remedial is a foundational course designed to enhance students' understanding and mastery of a specific field. The objective of these courses is to strengthen/increase the student's level of proficiency/competency. Students will only get a Pass (L) or Fail (G). These courses are not considered in CGPA calculations.

Course Code	Course Title	Credits
PPD1041	✓ <i>Kemahiran Insaniah dan Asas Kesukarelawan</i>	1
PBI 1112	<i>Persediaan Bahasa Inggeris 1</i> ** Preparatory English 1	2
PBI 1122	<i>Persediaan Bahasa Inggeris 2</i> ** Preparatory English 2	2

✓ *This course is compulsory to register.*

\*\*Applicable to students who scored MUET with a Band of 1-2.5.

\*\* *These students must first take Preparatory English I and Preparatory English 2, respectively.*

### 7.3.3 Malaysian University English Test (MUET)

UNIMAS students who scored Band 1 – 2.5 in MUET must register for Preparatory English (Level 1) in Semester 1. Upon scoring a Pass (L) in Preparatory English (Level 1), the student must then register for Preparatory English (Level 2) in Semester 2.

Those who scored Band 3 – 5+ in MUET can skip the Preparatory English course and register for the English Elective courses.

***Note:***

*If a student obtains Band 3 – 5+ in another attempt at MUET after entering UNIMAS, they can apply for an exemption from Preparatory English Level 2 and advance to the English Elective courses.*

All UNIMAS students are required to register and complete the Preparatory English courses and/or two out of six Elective English courses during their studies at UNIMAS.

## 7.4 Course Registration

Registration for generic and university elective courses is typically done at the beginning of each new semester. Before registering, please refer to the schedule provided, which lists the courses planned for that semester.

The number of credits for each semester has been pre-determined by the faculty.

Students **MUST PASS** all the courses selected. Otherwise, the course must be repeated until a passing grade is obtained.



## 7.5 Rules and Regulations

All FMHS students are expected:

- a) To take responsibility for meeting all the Core University Courses and University Elective courses' requirements.
- b) To inform the Academic Office of any discrepancies preventing them from graduating. This must be done at the earliest opportunity.

UNIMAS has adopted a formal policy about attendance at all scheduled teaching and learning sessions (i.e. lectures, laboratory sessions, clinical sessions, tutorials and presentations). Students will be barred from sitting for the final examination of any courses concerned if they have failed to attend a minimum of 90% of the total scheduled teaching and learning sessions.

If a student falls ill and cannot attend the scheduled teaching and learning session, they must inform the lecturer concerned at least one hour prior to the session and submit a medical certificate at the next scheduled session. **Only medical certificates from government hospitals/clinics and UNIMAS panel clinics are acceptable.**

The use of purchased air tickets will NOT be considered a valid reason for rescheduling presentations or examinations.

Examinations for Generic and University Elective courses are synchronised throughout the university and are scheduled to be held as follows: -

- a) Mid-Semester Examination – Week 7 or Week 8 of each semester.
- b) End of Semester Examination – the first week of UNIMAS Examination Week.

**Note:**

*Please refer to the programme's academic calendar for further information.*

For any questions or concerns about the Generic and University Elective courses, please get in touch with the following: -

Course Category	Coordinator
Generic / Elective / MPU	Dr Norhida bt Ramli
Basic Volunteerism	Dr Siti Zaleha binti Raduan

## 8.0 ASSESSMENT SYSTEM

### 8.1 Continuous Assessment

Students' progress is monitored throughout the programme, and feedback regarding their performance is provided regularly.

Components of continuous assessment in Phase I include quizzes, laboratory practical exercises/reports, problem-based learning activities and clinical assessments. Continuous assessment in Phase I (except for Family Health and Elective 1 Research, which are conducted over extended periods in parallel with standard Phase I blocks) contributes 20% to the final grade for each block.

In Phase II, components of continuous assessment vary depending on the specific nature of the postings; almost all postings include two or more of the following: quizzes, case presentations, case write-ups, seminars, and the observation and/or performance of specified procedures. The contribution of continuous assessment to the final grades differs between 'major' and 'minor' postings. Major postings, defined as those lasting more than three weeks, contribute 30% to continuous assessment. In contrast, minor postings, defined as those with a duration of three to six weeks or less, contribute 20% to the continuous assessment.

### 8.2 End-of-Block/Posting Examinations

**Phase I:** The End-of-Block Examinations are held at the end of every block. The End-of-Block examination contributes to 80% of the block assessment. The Elective 1 Research and Family Health Block assessment comprises a dissertation, a supervisor's report, a student presentation, and a written report.

**Phase II:** The End-of-Posting Examinations are held at the end of every posting in Phase II. The End-of-Posting examination contributes 70% and 80% to the posting assessment for majors and minors, respectively. The Elective II (Clinical) assessment is in the form of reports from both the supervisor and the student.

### 8.3 Professional Examinations

There are two Professional Examinations: The First Professional Examination at the end of Phase I (i.e., the end of the Year 2) and the Final Professional Examination at the end of Phase II (i.e. the end of the fifth (final) year). Both examinations are monitored by external examiners from other Malaysian medical schools or faculties, or from overseas. Passing the Final Professional Examination is an essential requirement for graduation.

### 8.4 Eligibility to take the Examinations

#### a) End-of-Block/Posting Examinations

To be eligible to take the End-of-Block/Posting Examinations, a student must have satisfactory attendance of at least 90% attendance during teaching-learning activities in Phase I and Phase II.

#### b) Professional Examinations

The First Professional Examination is done at the end of Year 2. Students must pass all blocks (excluding MDP20902 Family Health 2 and MDP20505 Elective 1 Research), including remedial examinations, to be eligible to sit for the First Professional Examination.

To be eligible to take the Final Professional Examination, a student must complete all Year 5 postings satisfactorily and pass each of them, including remedial examinations. If the student fails one remedial examination, they are required to repeat the posting in Semester 1 of the following academic year and pass the posting to be eligible to sit for the Supplementary Final Professional Examination.

## 8.5 Methods of Assessment

### 8.5.1 Phase I Assessment

The End-of-Block Examination comprises Multiple-Choice Questions: Multiple True and False (MTF) and Best Answer Questions (BAQ), Modified Essay Questions (MEQ) and/or Short Essay Questions (SEQ) and/or Short Answer Questions (SAQ), and Objective Structured Practical Examination (OSPE). The End-of-Block Examinations contribute 80% to the final block assessment.

Continuous Assessment comprises PBL assessment, practical reports, seminars, quizzes, and clinical assessments, which contribute 20% to the block assessment.

### 8.5.2 Phase II Assessment

The End-of-Posting Examinations and the Final Professional Examination each consist of two components. The first component is the theory examination, and the second is the clinical examination.

Each theory examination may consist of Multiple-Choice Questions: Multiple True and False (MTF) and Best Answer Questions (BAQ), Modified Essay Questions (MEQs), and/or Short Answer Questions (SAQs) or Short Essay Questions (SEQs).

Clinical examination may consist of observed long cases, mini-clinical evaluation exercise (Mini CEX), short cases, Objective Structured Clinical Examination (OSCE), and/or viva.

Instead of an examination, the assessment of the Year 4 Elective 2 (Clinical Elective) posting is based on student and supervisor reports.

## 8.6 Student's Appeal

- i. The appeal process applies to both End-of-Block and End-of-Posting Examinations.
- ii. A student may request a review of the assigned final grade for the block or posting.
- iii. Students must fill out the **Appeal to Review of Course Assessment's Results** in InAFS (<https://inafs.ia.unimas.my>) or fill in the manual appeal form as advised by the academic office/phase coordinators/academic advisors. This appeal form must be submitted to the faculty Dean, requesting a re-evaluation of their grade within the time frame allocated by the examination committee chairperson after the result is announced.
- iv. The appeal should be accompanied by a payment of **RM50.00** (non-refundable) per block/posting.
- v. An assigned examiner shall review the appeal.
- vi. The appeal result must be re-endorsed during the Examination Appeal Meeting, chaired by the Dean.
- vii. If a new mark/grade for a block/posting is given upon a re-evaluation, the new mark/grade will replace the earlier one.
- viii. Each grade given after this process is final, and no further appeal will be entertained after the Senate's endorsement.

## 8.7 Year Promotion Criteria

A Continuous Quality Improvement (CQI) measure on the Year Promotion Criteria was made recently and endorsed by the University's Senate (Reference: *Senat Bil. 1/2025 Ke-229 bertarikh 23 Januari 2025*), effective from the Semester 1 2024/2025 academic session. Generally, a student must pass ALL blocks/postings within that academic session to be eligible for promotion to the next academic year.

Remedial examination is introduced to allow students who fail the block/posting in that academic year to re-sit for the EOBE or EOPE. This measure ensures that all students master all disciplines according to the competency levels stated in the Malaysian Medical Council (MMC) programme standard, before being promoted to the next academic year. This examination is **NOT** intended for marks/grade improvement for those who have passed the initial EOBE / EOPE. The highest grade to be awarded for those who pass the remedial examination is grade 'C'.

### 8.7.1 Phase I

#### YEAR 1

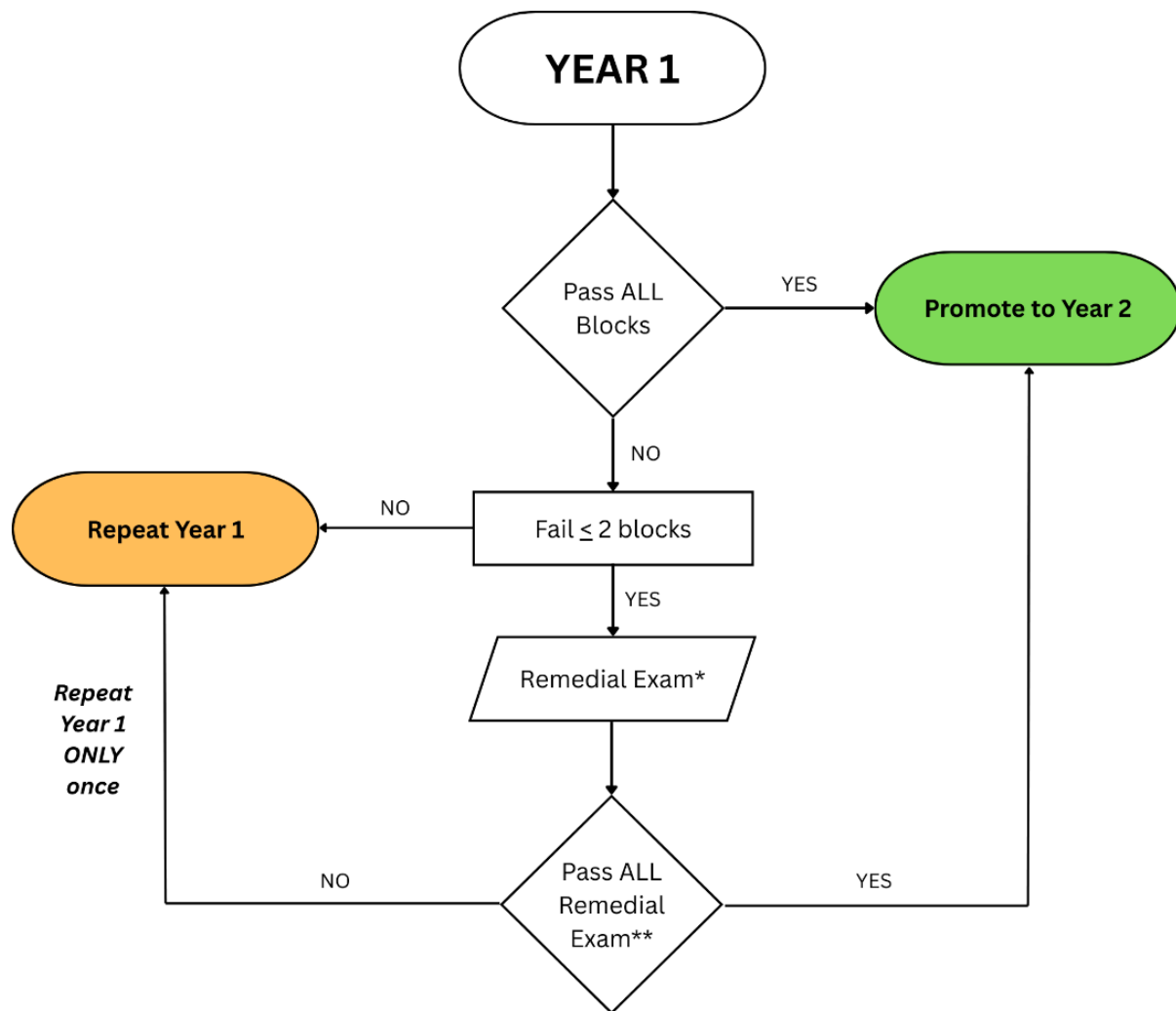
For a Year 1 student to be promoted to Year 2, they must PASS all the blocks in Year 1, with an average mark of  $\geq 50\%$ .

A student who fails  $\leq 2$  blocks will need to sit for a remedial examination. The student will be promoted to Year 2 if he/she pass all the remedial examinations for Year 1 blocks. The highest grade awarded for passing the remedial examination is C. Should he/she fail any of the remedial examinations, he/she must repeat Year 1.

A student who fails  $> 2$  blocks will automatically need to repeat Year 1.

A student is only allowed to repeat any year of study once. If a student continues to fail in the repeating year, he/she will automatically be barred from continuing the Medical programme.





*\*One attempt ONLY for each remedial exam*

*\*\*Highest grade C*

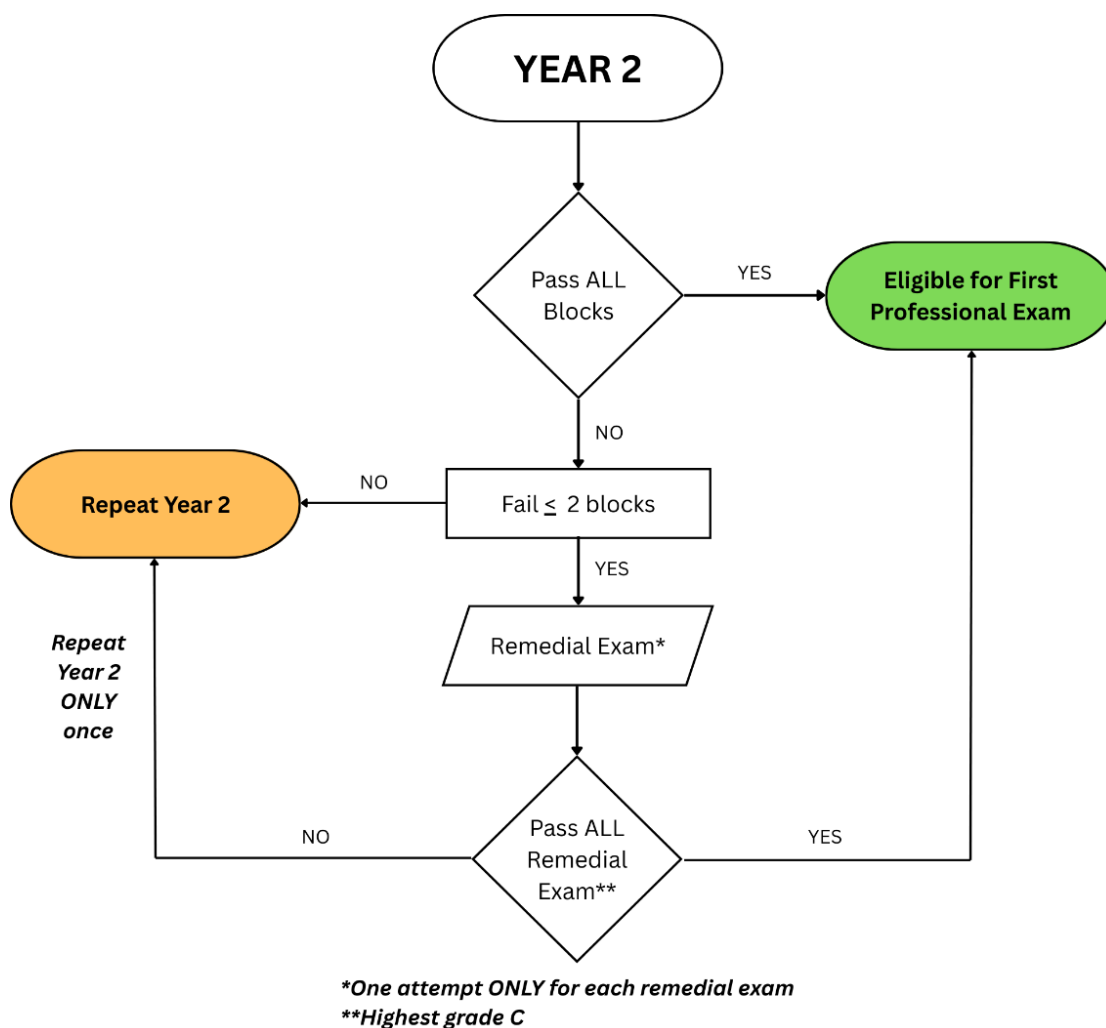
## YEAR 2

To be eligible to sit for the First Professional Examination, a student must pass ALL blocks in Year 2, with an average mark of  $\geq 50\%$ .

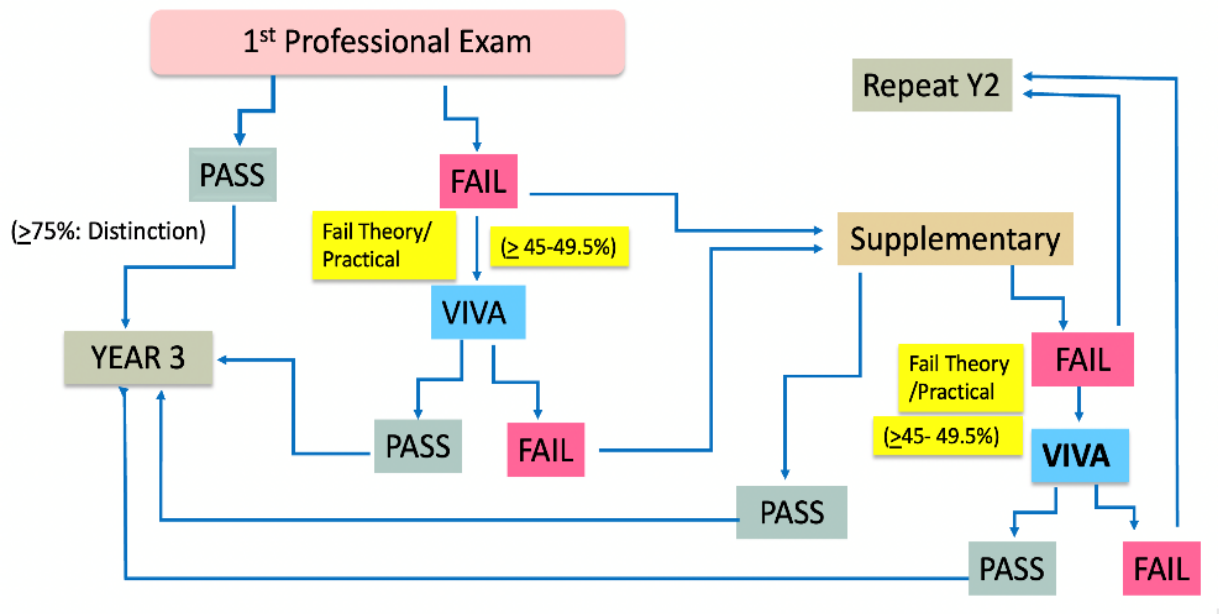
A student who fails  $\leq 2$  blocks will need to sit for a remedial examination. The student will be eligible to sit for the First Professional Examination if he/she pass all the remedial examinations of Year 2 blocks. The highest grade awarded for passing the remedial examination is C. Should he/she fail any of the remedial examinations, he/she must repeat Year 2.

A student who fails  $> 2$  blocks will automatically need to repeat Year 2.

A student is only allowed to repeat any year of study once. If a student continues to fail in the repeating year, he/she will automatically be barred from continuing the Medical programme.



To be promoted to Year 3, a student must pass the First Professional Examination. A student who fails this examination is required to sit for a supplementary examination. If the student fails the supplementary examination, he/she must repeat Year 2. A student is allowed to repeat any year of study only once. If a student continues to fail in the repeating year, he/she will automatically be barred from continuing the Medical programme.



## 8.7.2 Phase II

### YEAR 3

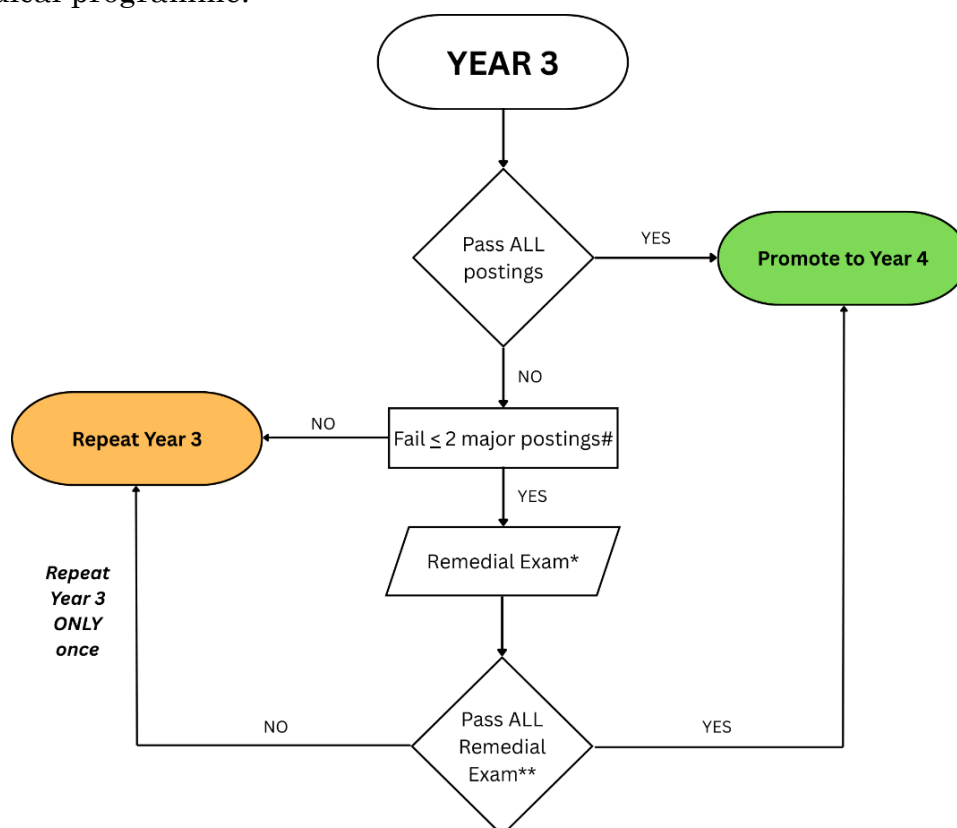
To be promoted to Year 4, a student must PASS all the postings in Year 3, with the following conditions:

1. Total posting mark  $\geq 50\%$ , AND
2. Must pass (score  $\geq 50\%$ ) for the patient-based clinical examination component

A student who fails  $\leq 2$  major postings<sup>#</sup> will need to sit for a remedial examination. The student will be promoted to Year 4 if he/she passes all the remedial examinations for Year 3 postings. Should he/she fail any of the remedial examinations, he/she must repeat Year 3.

A student who fails  $> 2$  major postings<sup>#</sup> will automatically need to repeat Year 3.

A student is only allowed to repeat any year of study once. If a student continues to fail in the repeating year, he/she will automatically be barred from continuing the Medical programme.



<sup>#</sup>Fail in 2 minor postings is equivalent to 1 major posting

\*One attempt ONLY for each remedial exam

\*\*Highest grade C

## YEAR 4

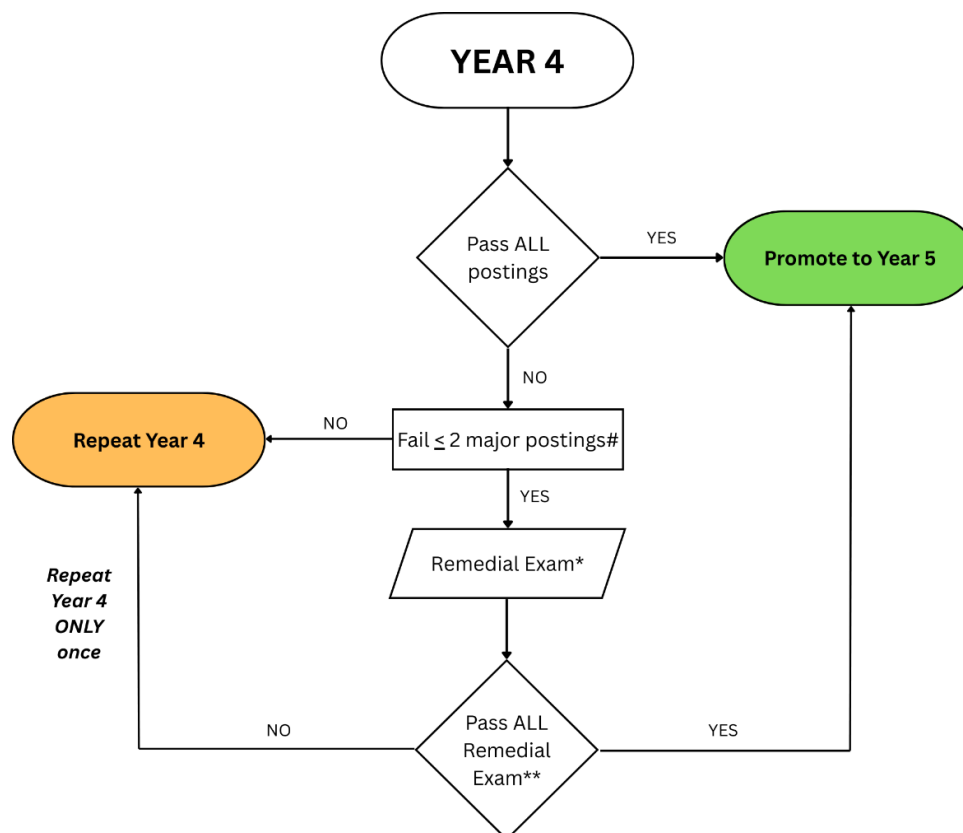
To be promoted to Year 5, a student must PASS all the postings in Year 4, with the following conditions:

1. Total posting mark  $\geq 50\%$ , AND
2. Must pass (score  $\geq 50\%$ ) for the patient-based clinical examination component

A student who fails  $\leq 2$  major postings<sup>#</sup> will need to sit for a remedial examination. The student will be promoted to Year 5 if he/she passes all the remedial examinations for Year 4 postings. Should he/she fail any of the remedial examinations, he/she must repeat Year 4.

A student who fails  $> 2$  major postings<sup>#</sup> will automatically need to repeat Year 4.

A student is only allowed to repeat any year of study once. If a student continues to fail in the repeating year, he/she will automatically be barred from continuing the Medical programme.



<sup>#</sup>Fail in 2 minor postings is equivalent to 1 major posting

<sup>\*</sup>One attempt ONLY for each remedial exam

<sup>\*\*</sup>Highest grade C

## YEAR 5

To be eligible to sit for the Final Professional Examination, a student must pass ALL postings in Year 5, with the following conditions:

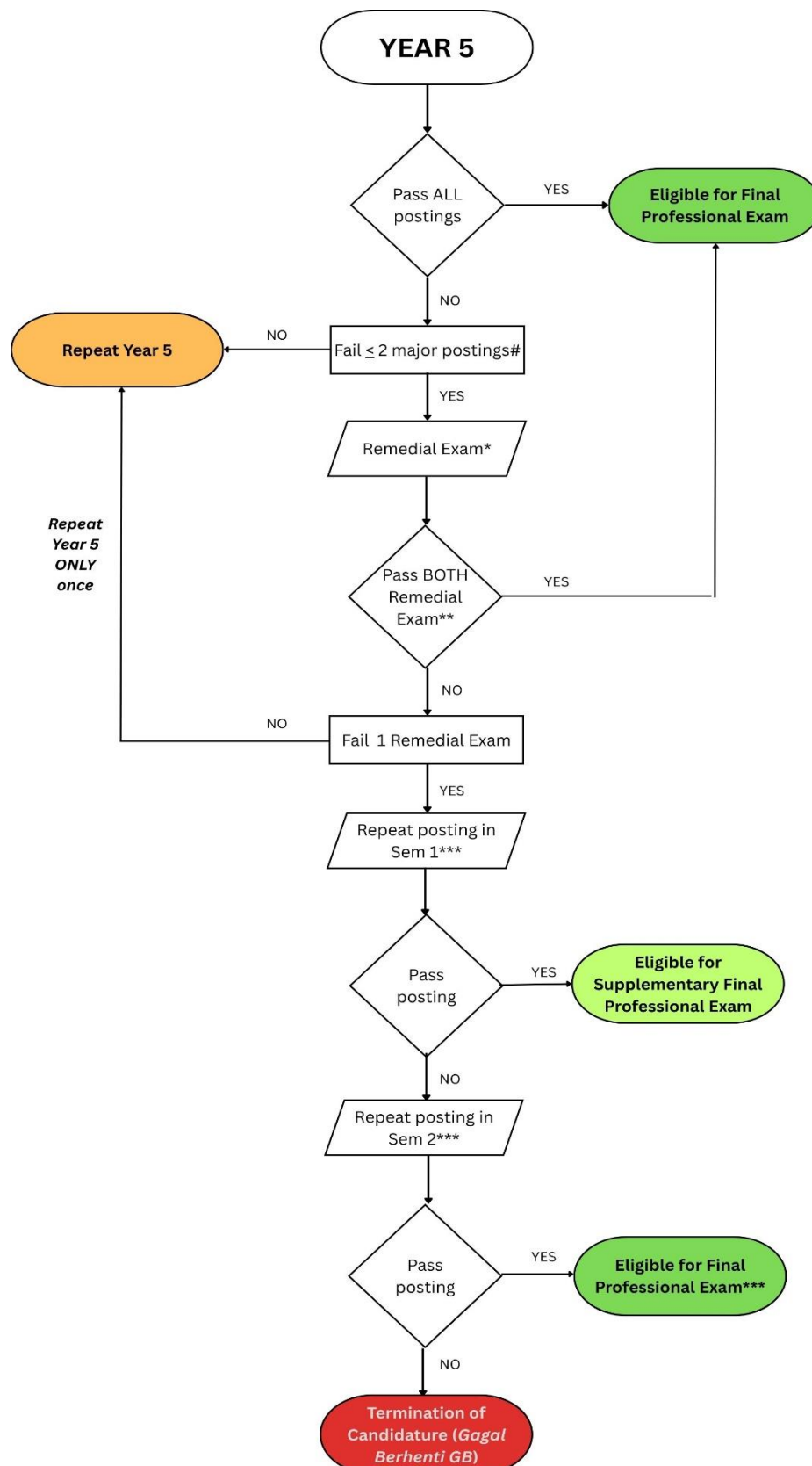
1. Total posting mark  $\geq 50\%$ , AND
2. Must pass (score  $\geq 50\%$ ) for the patient-based clinical examination component

A student who fails  $\leq 2$  major postings<sup>#</sup> will need to sit for a remedial examination. The student will be eligible to sit for the final professional examination if he/she passes all the remedial examinations for Year 5 postings. If he/she fails one of the remedial examinations, the student must repeat and pass the failed posting in Semester 1 of the next academic session to be eligible to sit for the Supplementary Final Professional Examination (this is only allowed if the student is within the maximum 7 years of study. If the student has exceeded the maximum 7 years, he/she will require Senate's approval to continue his/her study further). Should he/she fail both of the remedial examinations, he/she must repeat Year 5.

A student who fails  $> 2$  major postings<sup>#</sup> will automatically need to repeat Year 5.

A student is only allowed to repeat any year of study once. If a student continues to fail in the repeating year, he/she will automatically be barred from continuing the Medical programme.





#Fail in 2 minor postings is equivalent to 1 major posting

\*One attempt ONLY for each remedial exam

\*\*Highest grade C

\*\*\*next academic session / as permitted by senate approval

Endorsed at Senate Bil. 8/2025 ke-236 dated 24<sup>th</sup> September 2025

## 9.0 DEFERMENT OF STUDY

### 9.1 Consideration for deferment of study

A student who is sick for an extended period can apply to the Dean of the Faculty to defer his/her studies for a certain period. An appropriate verification from a registered medical doctor is required for all such cases. In exceptional cases where the verification is not from a registered medical doctor, an application for deferment of study can only be considered if the student has initially sought medical treatment. In psychiatric cases, approval for deferment will be subjected to the doctor's recommendation.

The medical doctors who provide treatment and verification for students must be from the Ministry of Health, the University or from the University's panel of doctors.

All decisions relating to such applications are made at the faculty level.

### 9.2 Consideration for deferment of sitting for examination

A student who is sick or facing other serious problems during the examination period must apply to the Dean of the Faculty to defer their/sitting for the examination. However, any application for a deferment must be made within 48 hours of the examination.

Any application to defer the sitting of examinations on medical grounds must be made with verification from a registered medical doctor treating the student. The attending doctor must be from the Ministry of Health, the University, or the University's panel of doctors.

## 10.0 PROHIBITION OF PLAGIARISM

Plagiarism and collusion are methods of cheating that fall under *Peraturan Akademik Universiti Malaysia Sarawak para 11: Etika Akademik Plagiarism*.

Plagiarism is the presentation of work which has been copied in whole or in part from another person's work, or from any other source, such as the internet, published books or periodicals, without due acknowledgement given in the text.

Collusion is the presentation of work resulting from the unauthorised collaboration with another person or persons.

Where there are reasonable grounds for believing that cheating has occurred, the only action that may be taken when plagiarism or collusion is detected is for the staff member not to mark the item of work and to report/refer the matter to the Dean. This may result in the work being disallowed and given a failing grade, or if the circumstances warrant, the matter may be referred to a committee of inquiry for investigation. Such an investigation may result in the matter being referred to the University Discipline Committee, which has the power to impose disciplinary action on the student.

*(Reference: Manual Jaminan Kualiti Akademik UNIMAS 2.0, pg 298)*

## 11.0 THE ACADEMIC ADVISORY SYSTEM

### 11.1 Purpose

The purpose of the Academic Advisory system is to guide students on academic matters and foster a close and constructive professional relationship between students and the faculty staff. While all lecturers in the faculty are potentially academic advisors to all students who seek their advice, each lecturer (mentor) is assigned responsibility to a small group of students (mentees).

### 11.2 Role of Academic Advisor

In essence, the key roles of an academic advisor are to:

- i. Assist their mentees in gaining an understanding of the curriculum, the faculty's expectations of its students and the university's requirements (for example, with respect of its student registration system);
- ii. Provide advice and guidance to students regarding academic matters.
- iii. Provide feedback and opportunities for reflective review following the release of end-of-block and end-of-posting results.
- iv. Assist students in solving problems and, when necessary, refer them to an appropriate authority or resource person.
- v. Perform any other functions as required by the faculty.

### 11.3 Responsibilities of Academic Advisee

All students are encouraged to meet with their academic advisor at least once per semester to discuss their academic progress, including any challenges they may encounter.

### 11.4 Implementation of the Academic Advisor

Although each student will be assigned an academic advisor, students may also seek advice from other academics with whom they feel comfortable. Academic advisors and advisees are expected to meet regularly, unless otherwise specified. Appointments for meetings between academic advisors and advisees are typically arranged at a time and place that is suitable for both parties.

## 12.0 ELIGIBILITY FOR GRADUATION / CONVOCATION

Eligibility for graduation/convocation requires students to complete ALL core courses, electives and generics courses.

The number of credit hours that need to be registered is:

Core courses	209
Elective courses	3
Generic courses	6
MPU courses	10
Remedial course	1
<b>Total</b>	<b>229</b>

## 13.0 FACULTY'S AWARDS

The faculty honours outstanding students, and various awards are presented annually. The awards are:

1	<b>MALAYSIAN MEDICAL ASSOCIATION</b> Sarawak Gold Medal Award for Best Medical Doctor
2	<b>KENYALANG MEDICAL FOUNDATION</b> Most Outstanding Medical Student Award
3	<b>KENYALANG MEDICAL FOUNDATION</b> Excellence Award for Best Medical Student for Year 4
4	<b>KENYALANG MEDICAL FOUNDATION</b> Excellence Award for Best Medical Student for Year 3
5	<b>KENYALANG MEDICAL FOUNDATION</b> Excellence Award for Best Medical Student for Year 2
6	<b>KENYALANG MEDICAL FOUNDATION</b> Excellence Award for Best Medical Student for Year 1
7	<b>KENYALANG MEDICAL FOUNDATION</b> Excellence Award for Best Student in Paediatrics
8	<b>KENYALANG MEDICAL FOUNDATION</b> Excellence Award for Best Student in Family Medicine
9	<b>ANUGERAH TAN SRI DATUK AMAR DR SULAIMAN HAJI DAUD</b> <i>Kecemerlangan dalam Bidang Surgeri</i>
10	<b>ANUGERAH PUAN SRI DATIN AMAR NAIMAH HAJI HASBI</b> <i>Kecemerlangan dalam Bidang Perubatan</i>
11	<b>DR MAHADHIR ALHADY SULAIMAN AWARD</b> Excellence in Ophthalmology
12	<b>ANUGERAH PROFESOR HASHAMI</b> <i>Kecemerlangan dalam Bidang Kesihatan Awam</i>
13	<b>ANUGERAH KECEMERLANGAN ORTOPEDIK PROF ZAKI</b> Excellence in Orthopaedics
14	<b>COLLEGE OF PATHOLOGISTS – UNIMAS PATHOLOGY PRIZE</b> Excellence in Pathology

## 14.0 DRESS CODE FOR STUDENTS

All students must follow the official student dress code set by UNIMAS when on Campus and in the Faculty. For clinical teaching sessions at the Faculty and designated healthcare facilities, students need to abide by the dress code below:

### 14.1 General rules

- i. All students must always wear their student card while on campus, faculty and designated healthcare facilities that they are posted to during their clerkship and clinical rotations.
- ii. Students are forbidden to display elements that are against good morals or contain undesirable designs, words, or phrases in terms of values or good norms.

### 14.2 Dress code for MALE students

- i. ALL male students must dress appropriately and decently.
- ii. Shirts and slacks that are appropriate for male students.
- iii. T-shirt, jeans and tight trousers are NOT ALLOWED.
- iv. Short and neat hairstyle. Male students are NOT ALLOWED to keep long hair (reaching the collar), ponytails, dyed hair or unkempt hairstyles.
- v. Nails must be trimmed short. Artificial nails are NOT ALLOWED.
- vi. Wearing suitable shoes. Slippers and sandals are prohibited.
- vii. Appearance should be gender appropriate. (Jewellery, including bangles, ear studs, earrings and necklaces, is NOT PERMITTED for male students.)

### 14.3 Dress code for FEMALE students

- i. ALL female students must dress appropriately and decently.
- ii. National attire, such as a blouse, long skirts, or loose trousers, is appropriate for female students.
- iii. Tights, miniskirts, and thin and revealing attire are NOT ALLOWED.
- iv. Neat hairstyle or headscarf. Long hair must be tied up.
- v. Wearing suitable shoes. Slippers and sandals are prohibited.
- vi. Makeup, accessories and fragrances should be kept to a minimum.
- vii. Nails must be trimmed short. Artificial nails are NOT ALLOWED.

*(Reference: UNIMAS/TNC(HEPA)/04-01/01 (11); Akta Universiti dan Kolej Universiti 1971 (Akta 30))*



# ETIKA PAKAIAN PELAJAR UNIVERSITI MALAYSIA SARAWAK

## Pakaian Pelajar Lelaki

1. Setiap pelajar hendaklah **berpakaian kemas, sopan dan bersesuaian dengan keadaan sepertimana yang diarahkan oleh pihak Universiti** (berseluar panjang dengan berbaju kemeja atau kemeja-T atau pakaian kebangsaan masing-masing yang sesuai).
2. **Berambut pendek, kemas dan tidak mencecah kolar baju.** Fesyen rambut tidak keterlaluan dan perlu bersesuaian serta kemas.
3. **Memakai pakaian sukan** yang sesuai semasa bersukan atau berekreasi.
4. **Memakai kasut** yang sesuai. Pemakaian selipar dan sandal adalah dilarang.
5. **Tidak memakai** perhiasan perempuan atau pakaian menyerupai perempuan.
6. **Mempamerkan kad pelajar** semasa urusan rasmi

## Pakaian Pelajar Perempuan

1. Setiap pelajar hendaklah **berpakaian kemas dan sopan bersesuaian dengan keadaan sepertimana yang diarahkan oleh pihak Universiti** (pakaian kebangsaan, blaus atau pakaian etnik masing-masing yang sesuai dan tidak menjolok mata. Pakaian mestilah tidak ketat/sendat/jarang/singkat serta tidak menunjukkan bentuk tubuh badan).
2. **Memakai kain atau skirt** yang labuhnya hendaklah di bawah paras lutut.
3. **Memakai seluar** yang bersesuaian, bersih dan sopan.
4. **Memakai alat solek, aksesori dan pewangi** secara sederhana.
5. **Memakai kasut** yang sesuai.
6. **Mempamerkan kad pelajar** semasa urusan rasmi

## Tempat Penguatkuasaan Peraturan Berpakaian

1. Menghadiri kuliah, tutorial dan amali.
2. Menggunakan Perpustakaan Tun Abdul Rahman Ya'kub (PeTARY).
3. Membuat urusan di Fakulti/Institut/Pusat/Bahagian.
4. Menghadiri majlis rasmi Universiti di dalam dan di luar kampus.
5. Menduduki peperiksaan dan ujian.
6. Berada di sekitar kampus atau tempat yang wajar berpakaian demikian.
7. Menjalani Latihan Industri.



FORMAL



TIDAK FORMAL



PAKAIAN SUKAN



PAKAIAN DI DALAM MAKMAL



CONTOH RAMBUT LELAKI  
DAN RAMBUT WANITA

**NOTA PENTING:** Setiap pelajar adalah tertakluk kepada Peraturan Berpakaian Pelajar yang ditetapkan oleh Universiti ketika berada di dalam kampus. Penguatkuasaan peraturan berpakaian pelajar adalah dibawah Kaedah-Kaedah Universiti Malaysia Sarawak (Tatatertib Pelajar-Pelajar) 1999 serta pindaan-pindaannya.



## CARA BERPAKAIAN YANG DILARANG DALAM UNIMAS



## 15.0 SEXUAL HARASSMENT CODE

UNIMAS has procedures in place to address complaints of sexual harassment. Sexual harassment is defined as uninvited, unwelcome, unwanted behaviour of a sexual nature which makes a person feel offended, humiliated, or intimidated.

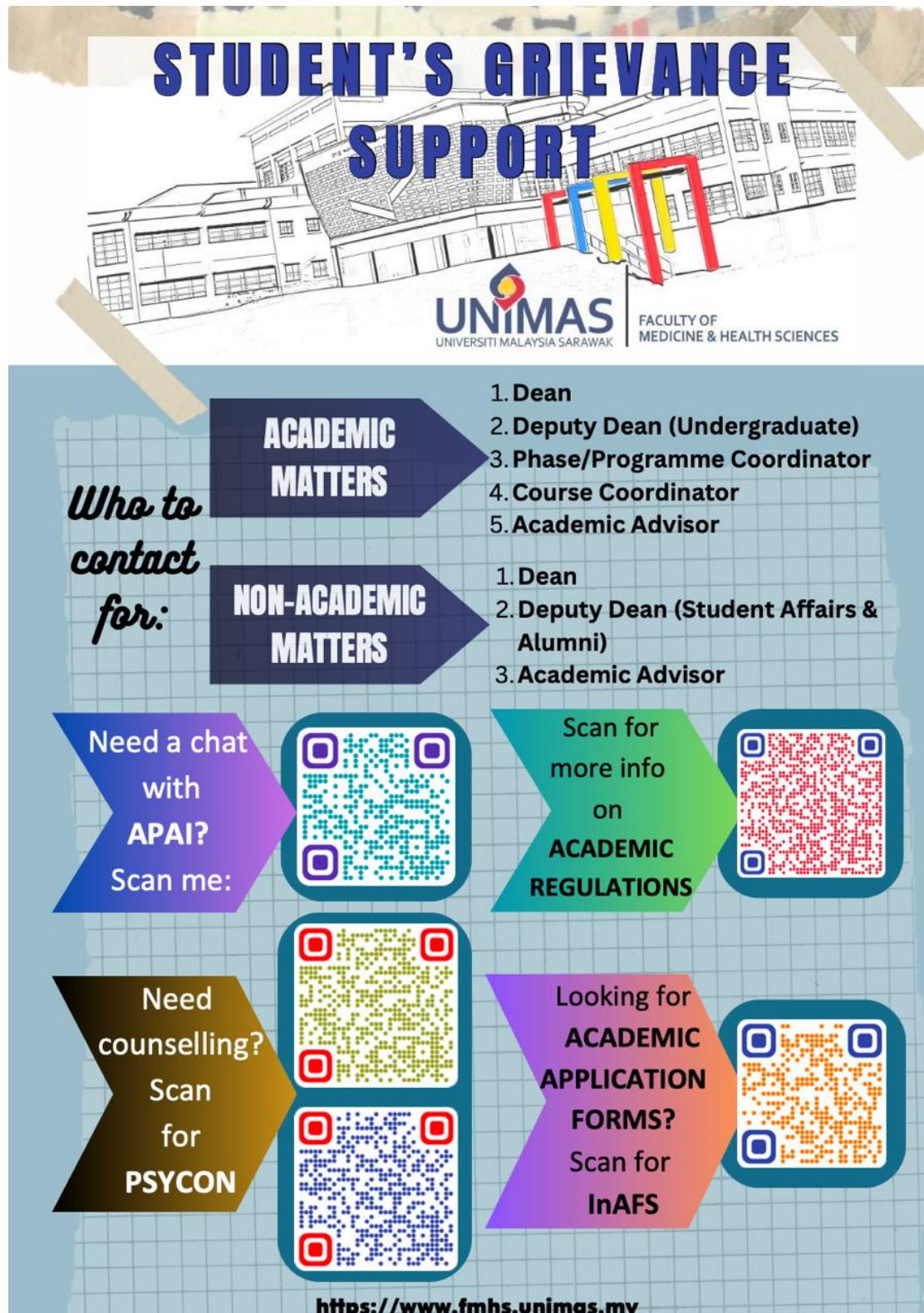
Sexual harassment manifests itself in five possible forms, namely:

- i. Verbal – e.g., offensive or suggestive remarks, comments, telling crude jokes, innuendoes, sexually explicit conversation.
- ii. Non-verbal/gesture – e.g., leering, ogling with suggestive overtones, licking lip provocatively, hand signals or sign language denoting sexual activity.
- iii. Visual – e.g., showing pornographic materials, offensive images, drawing sex-based sketches or writing letters, sexual exposure.
- iv. Psychological – e.g., repeated unwanted social invitations, relentless proposals for dates and intimacy.
- v. Physical – e.g., Inappropriate behaviour such as touching, patting, pinching, stroking, brushing up against someone, hugging, kissing, fondling, sexual assault.

The university takes the issue of victimisation very seriously. All enquiries and complaints are dealt with confidentially and impartially. If you are experiencing a problem that may be related to sexual harassment, please contact your academic advisor/course coordinator/phase coordinator/Head of Department/Deputy Dean/Dean or any other trusted personnel in the university.

## 16.0 STUDENT'S GRIEVANCE SUPPORT

The purpose of the student grievance policy is to provide an equitable and orderly process for resolving student grievances.





## 17.0 UNIVERSITY'S TOP MANAGEMENT



### **Vice-Chancellor**

YBhg Prof. Dr. Hj. Ahmad Hata bin Rasit



### **Deputy Vice-Chancellor (Academic & International)**

Prof Dr Fitri Suraya Mohamad Hapni Joblie



### **Deputy Vice-Chancellor (Student Affairs & Alumni)**

Professor Ir Dr Al Khalid



### **Deputy Vice-Chancellor (Research & Innovation)**

Professor Ir Dr Siti Noor Linda bt Taib



### **Registrar**

Tuan Haji Azlan bin Ramli

## 18.0 FACULTY'S MANAGEMENT AND ACADEMIC STAFF



### Dean

Prof. Dr. Asri bin Said

Email: [sasri@unimas.my](mailto:sasri@unimas.my)

Tel: 082-581000 ext 7002



### Deputy Dean (Undergraduate)

Professor Dr. Nariman Singmamae

Email: [snariman@unimas.my](mailto:snariman@unimas.my)

Tel: 082-581000 ext 7000



### Deputy Dean (Postgraduate and Innovation)

Prof. Dr. Chew Keng Sheng

Email: [kschew@unimas.my](mailto:kschew@unimas.my)

Tel: 082-581000 ext 7004/7704



### Deputy Dean (Student Affair & Alumni)

Assoc. Prof. Dr. Rekaya Anak Vincent Balang

Email: [vbrekaya@unimas.my](mailto:vbrekaya@unimas.my)

Tel: 082-267533



### Deputy Dean (Industry and Community Engagement)

Prof. Dr. Helmy bin Hazmi

Email: [hhelmy@unimas.my](mailto:hhelmy@unimas.my)

Tel: 082 – 581000 ext 7006, 7324

### Phase Coordinators



#### **Phase I Coordinator**

Dr Siti Fairouz binti Ibrahim

Email: [ifairouz@unimas.my](mailto:ifairouz@unimas.my)

Tel: 082-581000 ext 7487



#### **Phase II Coordinator**

Assoc. Prof. Dr Sabrina binti Lukas

Email: [lsabrina@unimas.my](mailto:lsabrina@unimas.my)

Tel: 082-267329

### Head of Department / Institute

#### **Basic Medical Sciences**

Dr Angela ak Siner

Email: [sangle@unimas.my](mailto:sangle@unimas.my)

Tel: 082-581000 ext 7493

#### **Paraclinical Sciences**

Assoc. Prof. Dr. Tan Cheng Siang

Email: [cstan@unimas.my](mailto:cstan@unimas.my)

Tel: 082-581000

#### **Pathology**

Assoc. Prof. Dr. Madzlifah bt. Ahadon

Email: [amadzlifah@unimas.my](mailto:amadzlifah@unimas.my)

Tel: 082-581000 ext 7522

#### **Medicine**

Prof. Dr Chai Chee Shee

Email: [cschai@unimas.my](mailto:cschai@unimas.my)

Tel: 082-267693

#### **Surgery**

Assoc. Professor Dr. Aini Fahriza binti Ibrahim

Email: [fiaini@unimas.my](mailto:fiaini@unimas.my)

Tel: 082-581000

**Obstetrics and Gynaecology**

Prof. Dr. Awi anak Idi

Email: [iawi@unimas.my](mailto:iawi@unimas.my)

Tel: 082-581000 ext 7615

**Paediatrics and Child Health**

Prof. Dr. Mohamed Ameenudeen B.A. Sultan Abdul Kader

Email: [akmameenudeen@unimas.my](mailto:akmameenudeen@unimas.my)

Tel: 082-581000 ext 7309

**Orthopaedics**

Prof. Dr. Mohd Anuar Ramdhan bin Ibrahim

Email: [imaramdhan@unimas.my](mailto:imaramdhan@unimas.my)

Tel: 082-581000

**Psychological Medicine**

Assoc. Prof. Dr. Ang Ai Ling

Email: [aaling@unimas.my](mailto:aaling@unimas.my)

Tel: 082-581000 ext 7490, 7667

**Community Medicine and Public Health**

Prof. Dr. Jeffery ak Stephen

Email: [sjeffery@unimas.my](mailto:sjeffery@unimas.my)

Tel: 082-581000 ext 7530

**Family Medicine**

Prof. Dr. Thomas Kana @ Kamarudin bin Kana

Email: [kkamarudin@unimas.my](mailto:kkamarudin@unimas.my)

Tel: 082-267314

**Ophthalmology**

Prof. Dr. Lim Lik Thai

Email: [ltlim@unimas.my](mailto:ltlim@unimas.my)

Tel: 082-581000 ext 7730

**Otorhinolaryngology**

Prof. Dr. Tang Ing Ping

Email: [iptang@unimas.my](mailto:iptang@unimas.my)

Tel: 082-581000 ext 7334

**Radiology**

Prof. Dr. Ahmad Tirmizi bin Jobli

Email: [jatirmizi@unimas.my](mailto:jatirmizi@unimas.my)

Tel: 082-267336

**Nursing**

Madam Dayang Zuraina binti Abang Haji Kashim

Email: [ahkdzuraina@unimas.my](mailto:ahkdzuraina@unimas.my)

Tel: 082-267681

**Director of Malaria Research Centre**

Dr Paul Cliff Simon Divis

Email: [pcsimon@unimas.my](mailto:pcsimon@unimas.my)

Tel: 082-267535

**Director of Centre for Tropical and Emerging Diseases**

Assoc. Prof. Dr Tan Cheng Siang

Email: [cstan@unimas.my](mailto:cstan@unimas.my)

Tel: 082-581000

**Director of Clinical Simulation Centre**

Mr Dev Nath Kaushal

Email: [nkdev@unimas.my](mailto:nkdev@unimas.my)

Tel: 082-267118

**Medical Education Unit / Curriculum Development & Innovation Unit**

Prof. Dr. Dayangku Norlida bt Awang Ojep

Email: [aodnorlida@unimas.my](mailto:aodnorlida@unimas.my)

Tel: 082-581000 ext 7750

**Quality Unit**

Prof Dr. Cheah Whye Lian

Email: [wlcheah@unimas.my](mailto:wlcheah@unimas.my)

Tel: 082-581000



Block and Posting Coordinators

YEAR 1

	Block code	Block Name	Block Coordinator	Clinical Coordinator
1	MDP10108	Foundation	AP Dr Ashley Soosay	AP Dr Koa Ai Jiun (Radiology)
2	MDP10208	Man in the Environment	Dr. Timothy Adrian Joseph Jinam	Dr Marlynna Sarkawi (Physiology)
3	MDP10307	Blood and Immunology	Mdm Tay Siow Phing	Prof Dr Henry Gudum (Haematology)
4	MDP10408	Musculoskeletal System	Dr Myat Su Bo	AP Dr Ong Lik Han (Orthopaedic)
5	MDP10507	Endocrine System and Metabolism	Dr Majed Ahmed Kacem bin Al-Mansoub	Dr Norashikin Samsudin (Pathology)
6	MDP10702	Family Health 1	AP Dr Azizah binti Azhar	AP Dr Deburra Peak Ngadan (Public Health)

*Total credit hours = 40*

YEAR 2

	Block code	Block Name	Block Coordinator	Clinical Coordinator
1	MDP20109	Nervous System & Behaviour	Dr Maizatul Fazilah Abdul Razak	Dr Yeoh Cheng Wooi (Medicine)
2	MDP20208	Gastrointestinal System	Mdm Amelia Mohamad	AP Dr Aini Fahriza Ibrahim (Surgery)
3	MDP20310	Cardiovascular & Respiratory Systems	Mdm Siti Maryam Ahmad Kendong	Prof Dr Chai Chee Shee (Medicine)
4	MDP20409	Renal & Reproductive Systems	Dr Melissa binti Mohammad Hirman	AP Dr Sohail Mushtaq (Surgery)  Dr. Abigail Rembui ak Jerip (O&G)
5	MDP20505	Elective 1	Dr Angela Siner	-
6	MDP20902	Family Health 2	Dr Law Leh Shii	AP Dr. Deburra Peak Ngadan (Public Health)

*Total credit hours = 43*

**YEAR 3**

No	Code	Posting	Name of Course Coordinators
1	MDP30101	Introduction to Clinical Clerkship*	Dr Chai Chau Chung
2	MDP30209	Medicine	Dr Affizal b Samsudin
3	MDP30309	Surgery	AP Dr Sohail Mushtaq
4	MDP30408	Obstetrics & Gynaecology	AP Dr Yee Yee Kyaing
5	MDP30609	Community Medicine and Public Health	AP Dr Sam Froze anak Jiee
6	MDP30702	Forensic Medicine	Prof Dr Mohammad Zulkarnaen Ahmad Narihan
7	MDP30902	Clinical Diagnosis Laboratory (CDL)	Dr Arlizan Baizura binti Ariffin
8	MDP31002	Radiology	AP Dr Wong Yi-Li

Total credit hours = 41 (\*not included)

**YEAR 4**

No	Code	Posting	Name of Course Coordinators
1	MDP40210	Psychological Medicine	Dr Amanda Albert
2	MDP40408	District Hospital & Family Medicine	AP Dr Liu Yu Chun
3	MDP40603	Ophthalmology	AP Dr Puppala Sai Perumalla Ravindra
4	MDP40703	Ear, Nose and Throat (ENT)	Dr Hanzali bin Jumastapha
5	MDP30804	Elective II	Dr Chen Yoke Yong
6	MDP41208	Paediatrics	AP Dr Janet Hii Lin Yee
7	MDP41308	Orthopaedics	Dr Vernon Tan Sze Yuan

Total credit hours = 44

**YEAR 5**

No	Code	Posting	Name of Course Coordinators
1	MDP50108	Paediatrics	Prof Dr Kok Juan Loong
2	MDP50208	Obstetrics & Gynaecology	Dr Shasheila binti Mohd Daud
3	MDP50512	Surgery, Anaesthesiology & Emergency Medicine Posting	Prof Dr Sim Sze Kiat (Surgery) AP Dr Samuel Tsan (Anaesthesiology) Prof Dr Nariman Singmamae (Emergency Medicine)
4	MDP50612	Medicine	AP Dr Sim Chun Yang

Total credit hours = 40

Coordinator	Name
<b>Year 1</b>	Mdm Tay Siow Phing
<b>Year 2</b>	Dr Siti Fairouz Ibrahim
<b>Year 3</b>	AP Dr Koa Ai Jiun
<b>Year 4</b>	Dr Nur Iwana Abdul Taib
<b>Year 5</b>	AP Dr Deburra Peak Ngadan

Coordinator	Name
<b>PBL</b>	Year 1: Dr Saiful Bahri bin Talip
	Year 2: Dr Marlynna Sarkawi
<b>Academic Advisor Phase I</b>	AP Dr Isabel Fong Lim
<b>Academic Advisor Phase 2</b>	Dr Winnie anak Johnny
<b>IDA Y5</b>	AP Dr Imam Bux Brohi
<b>G&amp;E</b>	Dr Norhida Ramli

Administration and Academic Offices



**Deputy Registrar, Administration Office**

Puan Emelia bin Tambi  
Email: [emme@unimas.my](mailto:emme@unimas.my)  
Tel: 082-581000 ext 7557



**Chief Assistant Registrar, Academic Office**

Mohamad Hidayat bin Badar  
Email: [bmhidayat@unimas.my](mailto:bmhidayat@unimas.my)  
Tel: 082-581000 ext 7008



**Assistant Administrative Officer**

Mr Tinggal Bin Mohamad  
Email: [mtinggal@unimas.my](mailto:mtinggal@unimas.my)  
Tel: 082 – 581000 ext 7330

**Personal Assistant to the Dean**

Mdm Suhazalita binti Hamzah  
Email: [hsuhazalita@unimas.my](mailto:hsuhazalita@unimas.my)  
Tel: 082-581000 ext 7003

**Personal Assistant to the Deputy Dean (Undergraduate)**

Mr Nor Azman bin Haini  
Email: [hnazman@unimas.my](mailto:hnazman@unimas.my)  
Tel: 082-581000 ext 7001

**Personal Assistant to the Deputy Deans (Postgraduate and Innovation, Industry and Community Engagement, Student Affairs and Alumni)**

Mdm Noorhaneyza binti Ali Suhardi Kechik  
Email: [anoorhaneyza@unimas.my](mailto:anoorhaneyza@unimas.my)  
Tel: 082-581000 ext 7005

Assistant Administrators in-charge of:

**Year 1, Generic & Elective Courses**

Mdm Za'arah bt. Razali

Email: [rzaarah@unimas.my](mailto:rzaarah@unimas.my)

Tel: 082 – 581000 ext 7380

**Year 3**

Mr Tinggal Bin Mohamad

Email: [mtinggal@unimas.my](mailto:mtinggal@unimas.my)

Tel: 082-587330

**Year 2 and Year 4**

Mdm Siti Muhaini bt. Hairiri

Email: [hsmuhaini@unimas.my](mailto:hsmuhaini@unimas.my)

Tel: 082 – 581000 ext 7373

**Year 5**

Mohammad Rozaiman bin Arbi

Email: [amrozaiman@unimas.my](mailto:amrozaiman@unimas.my)

Tel: 082-581000

## 19.0 ACADEMIC CALENDAR FOR SESSION 2025/2026

Semester	Week	Cohort 2025/2026 (OLD)				Cohort 2024/2025 (OLD)				Cohort 2023/2024				Cohort 2022/2023				Cohort 2021/2022				Cohort 2020/2021				Date																			
		MDP	MDP	MDP	MDP	MDP	MDP	MDP	MDP	MDP	MDP	MDP	MDP	MDP	MDP	MDP	MDP	MDP	MDP	MDP	MDP	MDP	MDP																						
Semester 1 (14/52)	1	5	20	9	-	5	10	25	Cohort 2025/2026 (OLD)	MDP 10108 Foundation	Family Health 1	MDP 20109 Nervous System & Behaviour	Elective 1	Family Health 2	Cohort 2023/2024				Cohort 2022/2023				Cohort 2021/2022				Cohort 2020/2021																		
	2	13	10	-	10	10	25	MDP 30702							BREAK 1/52				BREAK 2/52				11.10.2025 (Sat) TYT Birthday																						
	3	20	10	-	26	10	25	Forensic Medicine																			20.10.2025 (Mon) Deepavali																		
	4	27	10	-	2	11	25	MDP 30101 ICC																																					
	5	3	11	-	9	11	25								MDP 40210				MDP 41308				MDP 41208																						
	6	10	11	-	16	11	25								MDP 30209				MDP 30309				MDP 30609				MDP 30408																		
	7	17	11	-	23	11	25								MDP 30209				MDP 30309				MDP 30609				MDP 30408																		
	8	24	11	-	30	11	25								MDP 30209				MDP 30309				MDP 30609				MDP 30408																		
	9	1	12	-	7	12	25								MDP 30209				MDP 30309				MDP 30609				MDP 30408																		
	10	8	12	-	14	12	25								MDP 30209				MDP 30309				MDP 30609				MDP 30408																		
	11	15	12	-	21	12	25								MDP 30209				MDP 30309				MDP 30609				MDP 30408																		
	12	22	12	-	28	12	25								MDP 30209				MDP 30309				MDP 30609				MDP 30408																		
	13	29	12	-	4	1	26								MDP 30209				MDP 30309				MDP 30609				MDP 30408																		
	14	5	1	-	11	1	26								MDP 30209				MDP 30309				MDP 30609				MDP 30408																		
Semester 2 (14/52)	15	12	1	-	18	1	26	Cohort 2024/2025 (OLD)	MDP 20310 Blood & Immunology	MDP 10702	MDP 20905 Cardiovascular & Respiratory	MDP 20905	MDP 20902	Cohort 2023/2024				Cohort 2022/2023				Cohort 2021/2022				Cohort 2020/2021																			
	16	19	1	-	25	1	26							MDP 30609				MDP 30408				MDP 30209				MDP 30309				MDP 30609				MDP 30408											
	17	26	1	-	1	2	26							MDP 30609				MDP 30408				MDP 30209				MDP 30309				MDP 30609				MDP 30408											
	18	2	2	-	8	2	26							MDP 30609				MDP 30408				MDP 30209				MDP 30309				MDP 30609				MDP 30408											
	19	9	2	-	15	2	26							MDP 30609				MDP 30408				MDP 30209				MDP 30309				MDP 30609				MDP 30408											
	20	16	2	-	22	2	26							MDP 30609				MDP 30408				MDP 30209				MDP 30309				MDP 30609				MDP 30408											
	21	23	2	-	1	3	26							MDP 30609				MDP 30408				MDP 30209				MDP 30309				MDP 30609				MDP 30408											
	22	2	3	-	8	3	26							MDP 30609				MDP 30408				MDP 30209				MDP 30309				MDP 30609				MDP 30408											
	23	9	3	-	15	3	26							MDP 30609				MDP 30408				MDP 30209				MDP 30309				MDP 30609				MDP 30408											
	24	16	3	-	22	3	26							MDP 30609				MDP 30408				MDP 30209				MDP 30309				MDP 30609				MDP 30408											
	25	23	3	-	29	3	26							MDP 30609				MDP 30408				MDP 30209				MDP 30309				MDP 30609				MDP 30408											
	26	30	3	-	5	4	26							MDP 30609				MDP 30408				MDP 30209				MDP 30309				MDP 30609				MDP 30408											
	27	6	4	-	12	4	26							MDP 30609				MDP 30408				MDP 30209				MDP 30309				MDP 30609				MDP 30408											
	28	13	4	-	19	4	26							MDP 30609				MDP 30408				MDP 30209				MDP 30309				MDP 30609				MDP 30408											
29	20	4	-	26	4	26	MDP 30609				MDP 30408				MDP 30209				MDP 30309				MDP 30609				MDP 30408																		
30	27	4	-	3	5	26	MDP 30609				MDP 30408				MDP 30209				MDP 30309				MDP 30609				MDP 30408																		
31	4	5	-	10	5	26	MDP 30609				MDP 30408				MDP 30209				MDP 30309				MDP 30609				MDP 30408																		
32	11	5	-	17	5	26	MDP 30609				MDP 30408				MDP 30209				MDP 30309				MDP 30609				MDP 30408																		
33	18	5	-	24	5	26	MDP 30609				MDP 30408				MDP 30209				MDP 30309				MDP 30609				MDP 30408																		
34	25	5	-	31	5	26	MDP 30609				MDP 30408				MDP 30209				MDP 30309				MDP 30609				MDP 30408																		
35	1	6	-	7	6	26	MDP 30609				MDP 30408				MDP 30209				MDP 30309				MDP 30609				MDP 30408																		
Semester 3 (14/52)	36	8	6	-	14	6	26	Cohort 2025/2026 (OLD)	MDP 10507 Endocrine, metabolism & Nutrition	MDP 10702	MDP 20905 Cardiovascular & Respiratory	MDP 20905	MDP 20902	Cohort 2023/2024				Cohort 2022/2023				Cohort 2021/2022				Cohort 2020/2021																			
	37	15	6	-	21	6	26							MDP 30408				MDP 30609				MDP 30209				MDP 30309				MDP 30609				MDP 30408											
	38	22	6	-	28	6	26							MDP 30408				MDP 30609				MDP 30209				MDP 30309				MDP 30609				MDP 30408											
	39	29	6	-	5	7	26							MDP 30408				MDP 30609				MDP 30209				MDP 30309				MDP 30609				MDP 30408											
	40	6	7	-	12	7	26							MDP 30408				MDP 30609				MDP 30209				MDP 30309				MDP 30609				MDP 30408											
	41	13	7	-	19	7	26							MDP 30408				MDP 30609				MDP 30209				MDP 30309				MDP 30609				MDP 30408											
	42	20	7	-	26	7	26							MDP 30408				MDP 30609				MDP 30209				MDP 30309				MDP 30609				MDP 30408											
	43	27	7	-	2	8	26							MDP 30408				MDP 30609				MDP 30209				MDP 30309				MDP 30609				MDP 30408											
	44	3	8	-	9	8	26							MDP 30408				MDP 30609				MDP 30209				MDP 30309				MDP 30609				MDP 30408											
	45	10	8	-	16	8	26							MDP 30408				MDP 30609				MDP 30209				MDP 30309				MDP 30609				MDP 30408											
	46	17	8	-	23	8	26							MDP 30408				MDP 30609				MDP 30209				MDP 30309				MDP 30609				MDP 30408											
	47	24	8	-	30	8	26							MDP 30408				MDP 30609				MDP 30209				MDP 30309				MDP 30609				MDP 30408											
	48	31	8	-	6	9	26							MDP 30408				MDP 30609				MDP 30209				MDP 30309				MDP 30609				MDP 30408											
	49	7	9	-	13	9	26							MDP 30408				MDP 30609				MDP 30209				MDP 30309				MDP 30609				MDP 30408											
50	14	9	-	20	9	26	MDP 30408				MDP 30609				MDP 30209				MDP 30309				MDP 30609				MDP 30408																		
51	21	9	-	27	9	26	MDP 30408				MDP 30609				MDP 30209				MDP 30309				MDP 30609				MDP 30408																		
52	28	9	-	4	10	26	MDP 30408				MDP 30609				MDP 30209				MDP 30309				MDP 30609				MDP 30408																		
53	5	10	-	11	10	26	MDP 30408				MDP 30609				MDP 30209				MDP 30309				MDP 30609				MDP 30408																		
*Endorsed at Faculty academic Meeting Bil 1/2025 on 20 Mar 2025																																													
*Endorsed at JTSPPA Bil 5/2025 Ke -232 on 17 July 2025																																													
*Endorsed at Senate Meeting Bil 6/2025 Ke-234 on 29 July 2025																																													

## **Appendix A: List of University Elective Courses Offered in FMHS**

(Students are allowed to register **ONE** course either from the faculty or other faculties)

The following are the courses offered by the faculty by semester:

### **Semester 1, Session 2025/2026**

No.	COURSE CODE	COURSE NAME	CREDIT HOURS
1	MDU1053	Introduction to Medical Parasitology / <i>Pengenalan Kepada Parasitologi Perubatan</i>	3
2	MDU1083	Introduction to Health and Behaviour / <i>Pengenalan kepada Tingkahlaku dan Kesihatan</i>	3

### **Semester 2, Session 2025/2026**

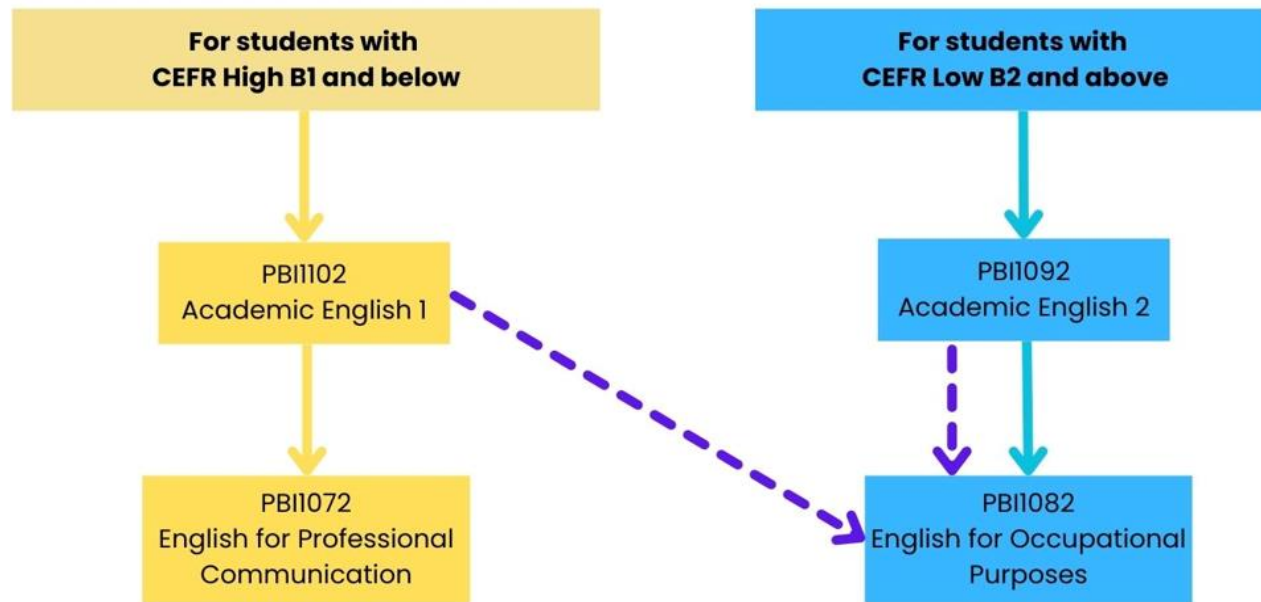
No.	COURSE CODE	COURSE NAME	CREDIT HOURS
1	MDU1013	Basic First Aids / <i>Asas Pertolongan Cemas</i>	3
2	MDU1023	Introduction to Medical Genetics / <i>Pengenalan Kepada Genetik Perubatan</i>	3
3	MDU1033	Healthy Lifestyle / <i>Gaya Hidup Sihat</i>	3
4	MDU1043	Introduction to Medical Entomology / <i>Pengenalan Kepada Entomologi Perubatan</i>	3
5	MDU1073	Introduction to Biomedical Physiology / <i>Pengenalan kepada Fisiologi Bioperubatan</i>	3
6	MDU1133	Introduction to Community-Based Health Promotion / <i>Pengenalam Kepada Promosi Kesihatan Berasaskan Komuniti</i>	3
7	MDU1163	Basic Health Toxicology in Personal Care / <i>Asas Toksikologi Kesihatan dalam Penjagaan Diri</i>	3

## Appendix B: English Course Structure for 2024/2025 Intake Onwards



FACULTY OF  
EDUCATION, LANGUAGE & COMMUNICATION

### ENGLISH COURSES STRUCTURE FOR 2024/2025 INTAKE ONWARDS



#### Note

- International students with conditional offer must pass PBI0040 Intensive English Language Programme and/or obtain CEFR High B1 and above.

---> Only for medical students

*Approved in the Senate Bill. 7/2024 ke 225*



**Jadual 1: Penyetaraan Ujian-Ujian Kompetensi Bahasa Inggeris**

English Competency		CEFR Basic A1 & A2	CEFR Low B1	CEFR Mid B1	CEFR High B1	CEFR Low B2	CEFR Mid B2	CEFR High B2-C1
MUET		Band 1 to 2.5	Band 3.0	Band 3.0	Band 3.5	Band 4.0	Band 4.0	Band 4.5-5+
IELTS		*	4.0	4.5	5.0	5.5	6.0	6.5-9.0
TOEFL	iBT	*	0-31	32-34	35-45	46-59	60-78	79-120
	Essentials (Online)	*	5-6.0	6.5-7	7.5	8	8.5-9	9.5-12
Pearson Test of English		*	36-42	43-46	47-50	51-58	59-62	63-90
Cambridge English Qualifications and Tests	<b>CEQT 1</b> - B1 Preliminary, B2 First, C1 Advanced, C2 Proficiency	*	140-146	147-153	154-159	160-168	169-175	>176
	<b>CEQT 2</b> - Linguaskill Online	*	140-146	147-153	154-159	160-168	169-175	>176
	<b>CEQT 3</b> - Occupational English Test (OET) (Conventional/Online)	*	*	*	*	200-249	250-299	>300
Lain-lain **	Lain-lain **	-	-	-	-	-	-	-

\*International students with conditional offer must pass PBI0040 Intensive English Language Programme and/or obtain CEFR High B1 and above.

\*\*Pelajar antarabangsa yang berasal daripada negara yang menggunakan Bahasa Inggeris sebagai bahasa rasmi ATAU Pelajar antarabangsa yang menggunakan kelayakan akademik bahasa pengantar sepenuhnya dan bercadang untuk melanjutkan pengajian ke peringkat lebih tinggi di Malaysia. (Pelajar yang jatuh dibawah item lain-lain\*\* perlu mengambil kursus PBI1102 dan PBI1072.

	Latest amendments
--	-------------------

## *White Coat Ceremony*

### *First Professional Examination 2025*



## *Orchid Ceremony*

### *Final Professional Examination 2025*



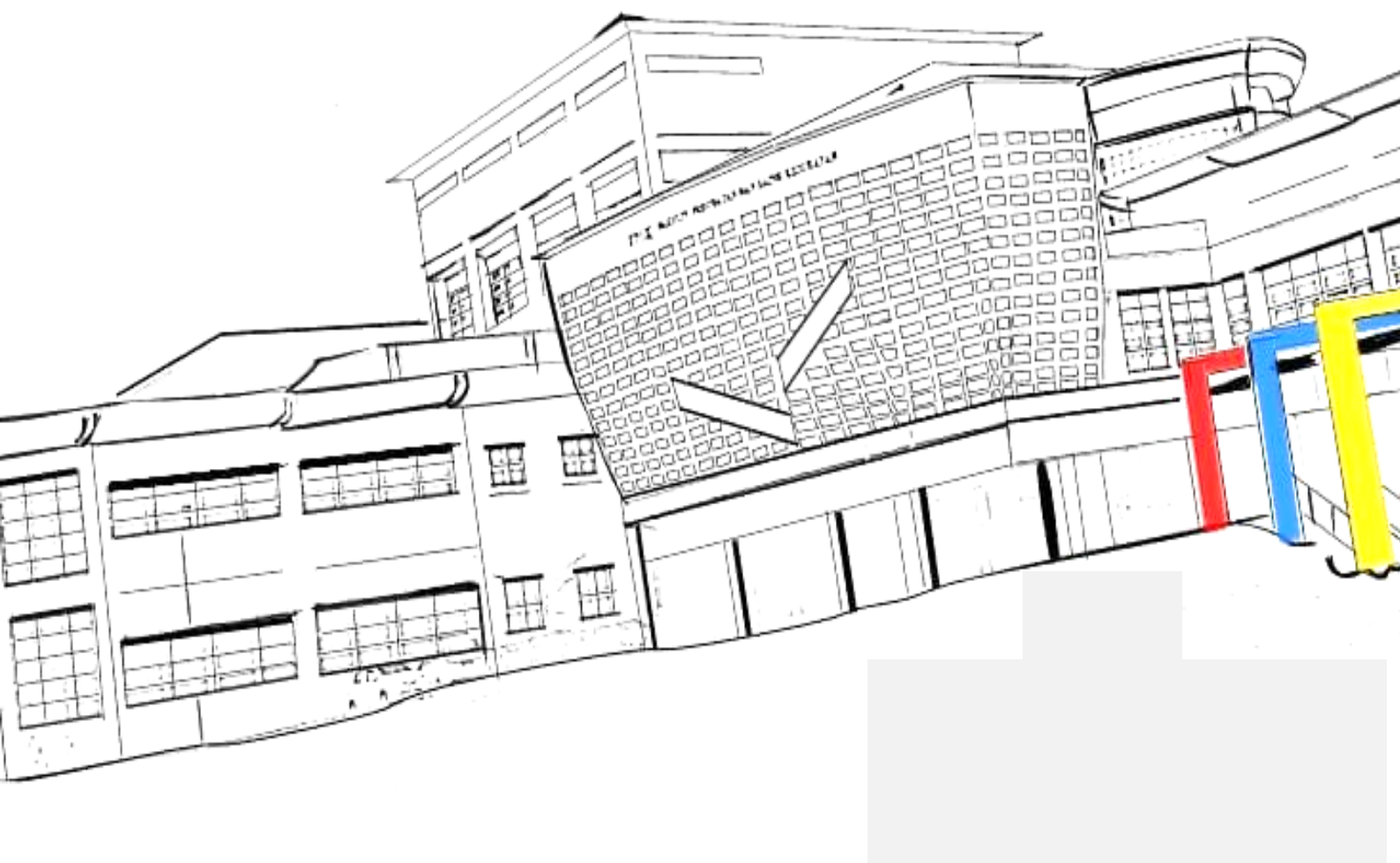
**EDITORIAL TEAM:**

**Prof Dr Nariman Singmamae  
Prof Dr Dayangku Norlida Awang Ojep  
Assoc Prof Dr Sabrina Lukas  
Dr Arlizan Baizura Ariffin  
Dr Winnie anak Johnny  
Dr Shazrina Ahmad Razali**

**Edition 1.0**

**2025**

**© COPYRIGHT RESERVED**



Faculty of Medicine and Health Sciences  
Universiti Malaysia Sarawak  
94300 Kota Samarahan, Sarawak, Malaysia  
Tel: 082-58100 ext 7557, 7775, 7765 Fax: 082-665152  
Website: <https://www.fmhs.unimas.my>